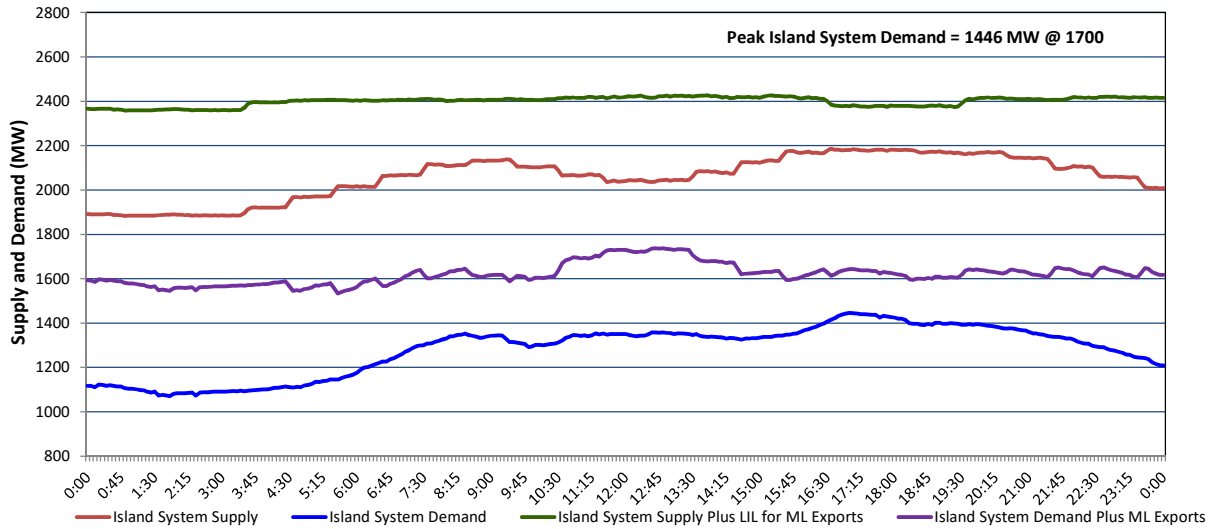


Newfoundland Labrador Hydro (NLH) Supply and Demand Status Report Filed Friday, December 27, 2024

Section 1 Island Interconnected System - Supply, Demand & Exports Actual 24 Hour System Performance For Monday, December 23, 2024



Island Supply Notes For December 23, 2024 ¹

A As of 0000 hours, October 20, 2024, Holyrood Unit 1 unavailable due to forced extension to planned outage (170 MW).

Section 2 Island Interconnected System - Supply, Demand & Outlook

Tue, Dec 24, 2024	Island System Outlook ²	Seven-Day Forecast	Island System Daily Peak Demand (MW)	
			Forecast ⁸	Adjusted ⁶
Island System Supply: ⁴	2,147 MW	Tuesday, December 24, 2024	1,440	1,360
NLH Island Generation: ^{3,7}	1,525 MW	Wednesday, December 25, 2024	1,270	1,190
NLH Island Power Purchases: ⁵	100 MW	Thursday, December 26, 2024	1,265	1,185
NP and CBPP Owned Generation:	215 MW	Friday, December 27, 2024	1,210	1,130
LIL/ML Net Imports to Island: ⁹	307 MW	Saturday, December 28, 2024	1,240	1,160
		Sunday, December 29, 2024	1,235	1,155
7-Day Island Peak Demand Forecast:	1,440 MW	Monday, December 30, 2024	1,225	1,145

Island Supply Notes For December 24, 2024

Notes:

1. Generation outages for running and corrective maintenance are included. These are not unusual for power system operations. They generally do not impact customer supply. Hydro schedules outages to system equipment whenever possible to coincide with periods when customer demands are low and sufficient supply reserves are available. However, from time to time equipment outages are necessary and reserves may be impacted.
2. As of 0800 Hours.
3. Gross continuous unit output.
4. Gross output from all Island sources (including Note 4).
5. NLH Island Power Purchases include: ML Imports, Exploits Generation, Rattle Brook, Star Lake, Wind Generation and capacity assistance (when applicable).
6. Adjusted for interruptible load and the impact of voltage reduction when applicable.
7. Due to limitations inherent in the design of combustion turbines, the output of combustion turbines may be reduced in the event that ambient temperatures exceed the threshold required for full rated output. This threshold is dependent on the design of each turbine.
8. Does not include ML Exports.
9. LIL Import sunk in the Island System. Actual LIL flows will be restricted by various system conditions including, but not limited to, Island Load, ML Exports and Avalon Unit status.

Section 3 Island Peak Demand and Exports Information Previous Day Actual Peak and Current Day Forecast Peak

Mon, Dec 23, 2024	Island Peak Demand ¹⁰	17:00	1,446 MW
	Exports at Peak		198 MW
	LIL Net Imports to Island		5,742 MWh
Tue, Dec 24, 2024	Forecast Island Peak Demand		1,440 MW

Notes: 10. Island Demand is supplied by NLH generation and purchases, LIL Imports plus generation owned and operated by Newfoundland Power and Corner Brook Pulp & Paper (Deer Lake Power, DLP).